



HOSPICE NORTHWEST

*Offering Support
to the Vulnerable*





How does HNW benefit the vulnerable in our community?

- PALLIATIVE SUPPORT
- GRIEF SUPPORT
- CAREGIVER SUPPORT
- COMMUNITY OUTREACH SUPPORT



About Hospice Northwest

Our rich history

Hospice Northwest is a non-profit community hospice organization that began in 1986 as the Thunder Bay Community Palliative Care Volunteers. We are honoured to serve approximately 450 end-of-life clients and their families each year.

In the 36 years we have been serving our community, our organization has grown to include programming in the towns of Geraldton/Longlac, Terrace Bay/Schreiber, Marathon, Manitouwadge and Nipigon.





Support for the

VULNERABLY
HOUSED

VULNERABLE
CHILDREN

VULNERABLY
ILL & LONELY

With your donations we can help them all



"One of the most important things you can do on this earth is to let people know they are not alone."

- SHANNON L. ALDER

What is Palliative Care?

It is care for patients with life threatening illnesses and their families

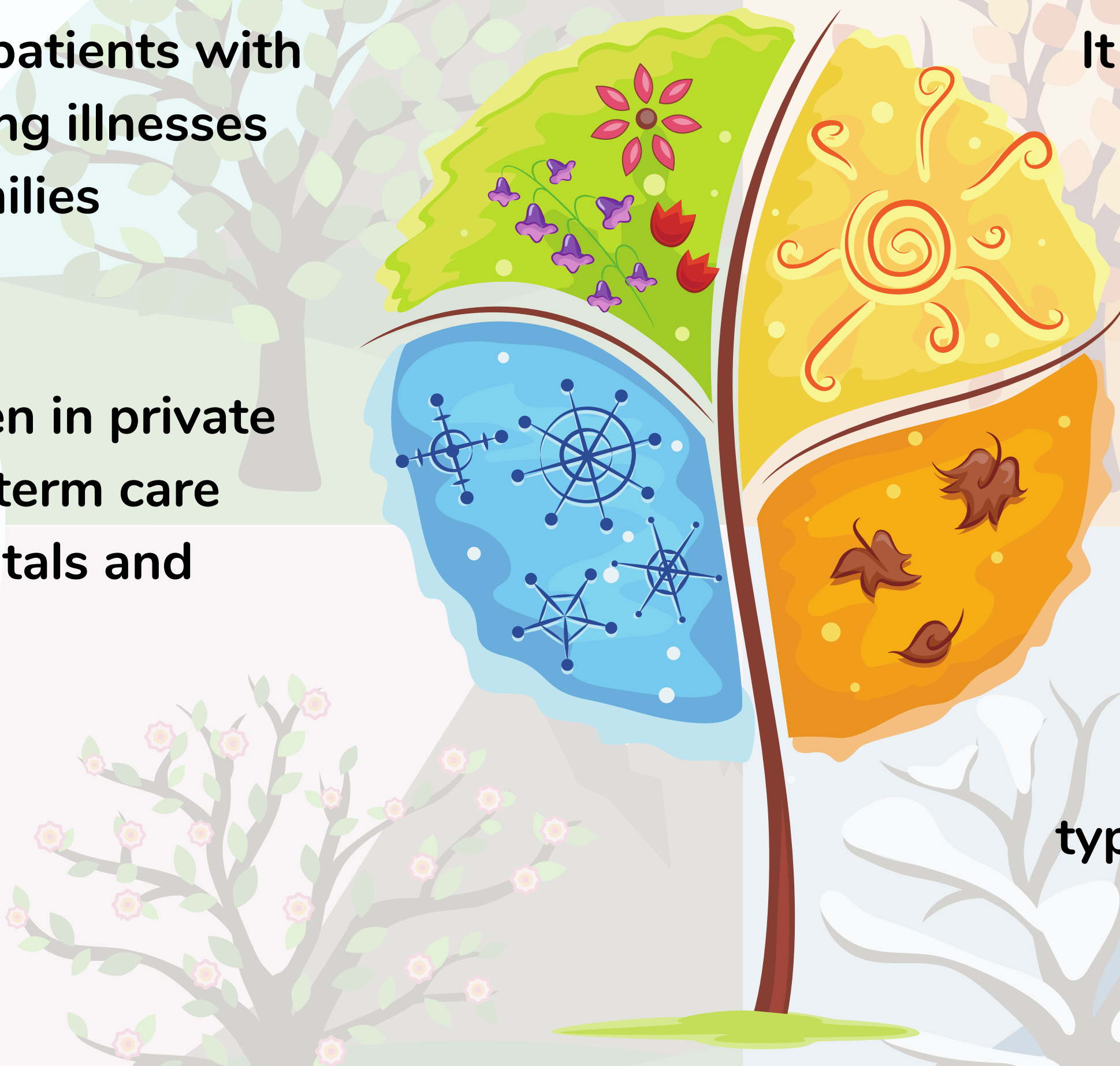
It can be given in private homes, long term care homes, hospitals and hospices

It improves quality of life

It benefits health systems by reducing unnecessary hospital admissions

It relieves physical, psychosocial and spiritual suffering

It can be done by many types of health professionals and volunteers



What your donations will fund:



JOURNEY HOME TEAM

The Journey Home program provides compassionate care to clients with a life limiting illness who are vulnerably housed. Journey Home volunteers receive specialized training, ensuring they are able to provide support in a culturally relevant way. They are committed to ensuring those who are vulnerable and under served do not die alone.



HUUG CHILDREN'S PROGRAM

The HUUG Program was created to help kids process their grief after a loved one has died. This program provides children with the tools and resources they need to understand their feelings and develop healthy coping strategies.



CAREGIVER SUPPORT

Providing care to a person who is ill can be both rewarding and difficult. Our caregivers services are available to help family members feel supported during their caregiving role.



REGIONAL PROGRAMS

Hospice Northwest provides all of our services across the District of Thunder Bay. Trained volunteers are available to offer palliative, grief & caregiver support to clients in the Region.

Journey Home volunteer Jillian visits the residents of Kwae Kii Win, the Managed Alcohol Program facilitated through Shelter House, as part of Hospice Northwest's Community Outreach program. In addition, HWW offers support to residents of 6 other shelters in Thunder Bay.

In Ojibwe, Kwae Kii Win means turning point and it is within these walls that the residents live and grow together, experiencing the ups and downs of life, love, and loss. At each of her visits, Jill is welcomed with smiles and immediately feels a sense of warmth and community. The personality of this home shines through the kind hearts that reside there.

During her visits, stories are shared over board games, crafts and gardening. Even through the most difficult of times, the sense of togetherness at Kwae Kii Win is ever-present and brings healing to discussions about life, mortality, death, loss and the grief which impacts the residents on a frequent basis.

Death is a very difficult subject to discuss for many of us, but imagine having to deal with a palliative diagnosis when you are vulnerably housed. Who can you turn to for support? Where do you want to die? What resources do you need? These are some of the questions we address with our Journey Home clients.

This program is desperately needed in our community. These clients often have difficulty getting the support they need due to stigma, discrimination and racism. Sadly, there are significant barriers to palliative care and access to quality end-of-life care for those who are homeless or vulnerable.

During our Annual Campaign, please consider donating to ensure that the Journey Home program can continue to provide support to the vulnerably housed in Thunder Bay.




Journey Home Program

Isabelle and her grandmother were referred to our newly launched H.U.U.G. (Help Us Understand Grief) Children's Program in June 2022. Isabelle's mom died suddenly when the little girl was just 3 years old. Her grandmother, struggling with her own overwhelming grief at the tragic loss of her daughter, took on the role of full-time caregiver to her tiny granddaughter. In the years after her mother's death, Isabelle has begun to ask questions about her mom, questions that are sometimes difficult for her grandmother to answer. When the family found our H.U.U.G. program this summer, they discovered a place where they could feel less alone, where they could share their feelings of loss with others who understand.

The program guides children through therapeutic activities designed to help them cope in a healthy way, and understand their difficult feelings. It also offers caregivers educational resources and opportunities for open discussion on ways they can best navigate conversations with their child, and find answers to common questions. The HUUG program warmly envelops the grieving families within a shared community of support.

As Isabelle ages, she will encounter many milestones in her life which she would normally have shared with her mother - birthdays, Christmas, Mother's Day - so many special occasions. Adapting to the absence of someone important in our lives is difficult for everyone. But for a grieving child, the "milestone moments" after the death of someone important are especially difficult. Even surrounded by family & friends, grieving children may feel isolated, alone, and as if no one understands. Most children don't know how to cope with these difficult emotions.

Hospice Northwest's HUUG program does not currently receive any ongoing funding. We must rely on the generosity of private donors like you to support these vulnerable children.

Please consider donating to the HUUG program during our Annual Campaign to ensure vulnerable children like Sophie receive the support they need!



HUUG Program



Help Us Understand Grief

HUUUG

Aidez-nous à comprendre le deuil

HOSPICE NORTHWEST

**With your support, we can realize
our vision of ensuring that every
child and youth in Thunder Bay and
region has honest information and
well informed support when
someone they care about is dying
or has died.**



Hospice
NORTHWEST SERVICES



Journey Home Program

The Journey Home program provides compassionate care to clients with a life limiting illness who are vulnerably housed. Journey Home volunteers are committed to ensuring those who are vulnerable and under served do not die alone.



Please donate

2022 ANNUAL
CAMPAIGN

GOAL:

\$30,000

**WE MUST RAISE A MINIMUM
OF \$30,000 IN ORDER TO
CONTINUE TO OFFER OUR
SERVICES TO OUR
VULNERABLE CLIENTS**

to our Annual Campaign



Hospice
NORTHWEST SERVICES